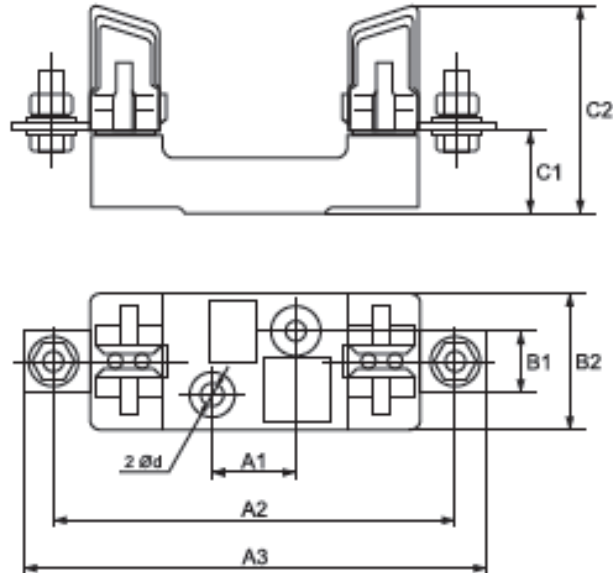


BASES FOR HIGH POWER SAFETY DEVICES



The series bases for high power safety device is manufactured of permittivity alloy with mounted contact jaws of electrolytic copper supplied with special springs for contact compression and easy fuse links taking out. All current leading parts are connected to inlet outlet terminals with bolts; the terminals also end with bolts, to which the power supply conductors are connected. The bases are offered in five type sizes corresponding to the five types of fuse links.

Dimensions:



Dimensions
(mm)

Base type	A1	A2	A3	B1	B2	C1	C2	Ød
<i>SIST00</i>	25	100	120	-	30	25	60	7.5
<i>SIST 0</i>	25	150	170	-	30	37	72	7.5
<i>SIST1</i>	25	175	200	30	58	38	84	10.5
<i>SIST2</i>	25	200	225	30	60	38	100	10.5
<i>SIST3</i>	25	210	250	30	60	40	105	10.5

Basic data:



Base type	Fuse link type	Rated current (A)	Rated voltage Un (V)	Weight (gr)	Packing/ Box (pcs)	Catalogue number
SIST00	NT 00	Up to 160	600	193	5/120	12001
SISP00	NT 00	Up to 160	600	215	5/120	12001P

**Remark: Fuse bases SIST are made of resin*

**Remark: Fuse bases SISP are made of porcelain*



Base type	Fuse link type	Rated current (A)	Rated voltage Un (V)	Weight (gr)	Packing/ Box (pcs)	Catalogue number
SIST0	NT 0	Up to 160	600	295	3/54	12010
SISPO	NT 0	Up to 160	600	319	3/54	12010P

**Remark: Fuse bases SIST are made of resin*

**Remark: Fuse bases SISP are made of porcelain*



Base type	Fuse link type	Rated current (A)	Rated voltage Un (V)	Weight (gr)	Packing/ Box (pcs)	Catalogue number
-----------	----------------	-------------------	----------------------	-------------	--------------------	------------------

SIST1	NT 1	Up to 250	600	550	3/36	12100
SISP1	NT 1	Up to 250	600	550	3/36	12100P

**Remark: Fuse bases SIST are made of resin*

**Remark: Fuse bases SISP are made of porcelain*

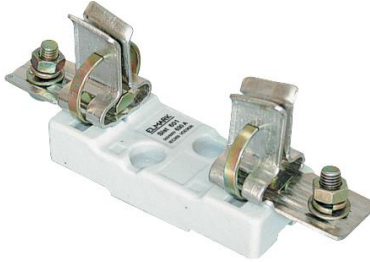


Base type	Fuse link type	Rated current (A)	Rated voltage Un (V)	Weight (gr)	Packing/ Box (pcs)	Catalogue number
-----------	----------------	-------------------	----------------------	-------------	--------------------	------------------

SIST2	NT 2	Up to 400	600	770	1/20	12200
SISP2	NT 2	Up to 400	600	810	1/20	12200P

**Remark: Fuse bases SIST are made of resin*

**Remark: Fuse bases SISP are made of porcelain*



Base type	Fuse link type	Rated current (A)	Rated voltage Un (V)	Weight (gr)	Packing/ Box (pcs)	Catalogue number
SIST3	NT 3	Up to 630	600	965	1/20	12300
SISP3	NT 3	Up to 630	600	987	1/20	12300P

**Remark: Fuse bases SIST are made of resin*

**Remark: Fuse bases SISP are made of porcelain*

Standards:

- EN 60269-1

